



PARTS LIST FOR ADJUSTABLE CLUTCH (67997) USED ON "1AM" SERIES TOOLS

Form Z525
Date 6-00/B
Page 1 of 1

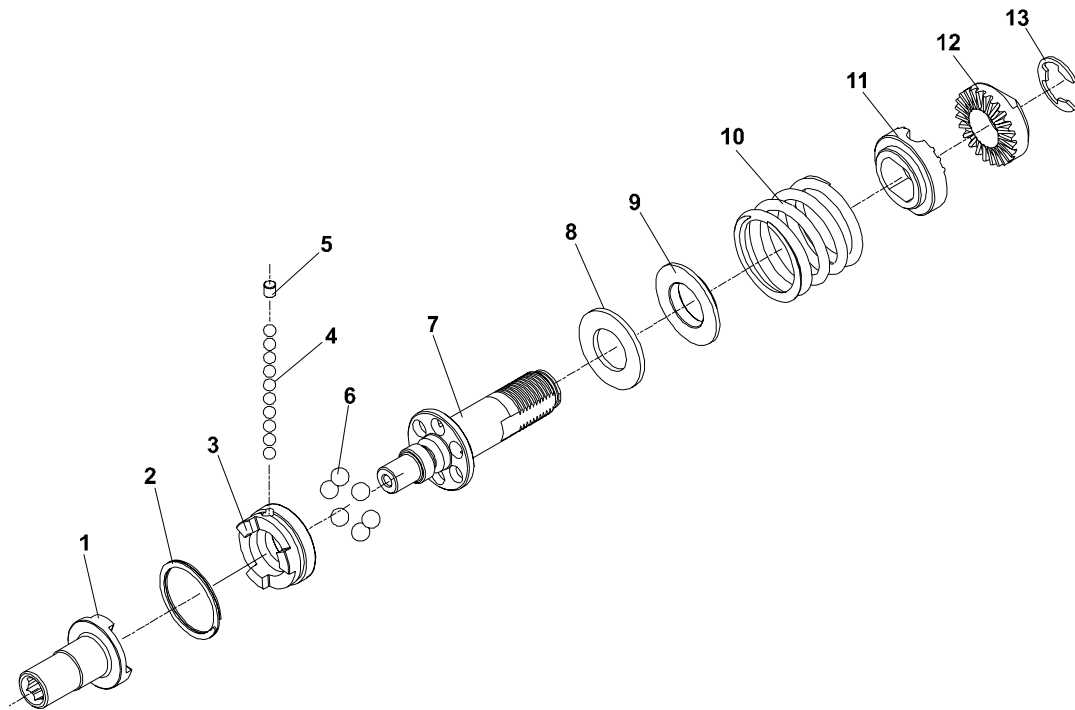


Fig. No.	Part No.	Description
1.	67990	Drive—Coupler
2.	66063	Ring—Retaining
3.	67150	Jaw—Clutch
4.	10303	Ball—1/8" Dia. (10)*
5.	66055	Plug
6.	10306	Ball—3/16" Dia. (6)*
7.	67149	Spindle—Clutch
8.	68014	Race—Thrust
9.	66053	Washer—Thrust
10.	66048	Spring (Silver)(800, 1100 RPM)(30-50 in-lb)
	66049	Spring (Blue)(1500 RPM)(15-35 in-lb)
	66050	Spring (Green)(2800 RPM)(2-20 in-lb)
11.	66047	Washer—Adjustment
12.	66046	Nut—Adjustment
13.	21493	Ring—Retaining

Complete Assembly:

67997 Ass'y—Adjustable Clutch (Angle)

Items Not Shown:

2366 Wrench—Clutch Adjustment

*Order Quantity As Required
FURNISH CATALOG, SERIAL, AND
MODEL NUMBER WHEN
ORDERING PARTS

SIoux TOOLS INC.

2901 FLOYD BOULEVARD ■ PO BOX 507 ■ SIOUX CITY, IOWA 51102-0507 USA ■

Printed In U.S.A.